



SBX-4

Integrator Guide

Part No. 875-0176-000 Rev. B1

This device complies with Part 15 of the FCC rules. Operation is subject to the following two conditions:

- This device may not cause harmful interference.
- This device must accept any interference received, including interference that may cause undesired operation.

COPYRIGHT NOTICE

Hemisphere GPS Inc. Precision GPS Applications

© Copyright Hemisphere GPS Inc. (2007). All rights reserved.

No part of this manual may be reproduced, transmitted, transcribed, stored in a retrieval system or translated into any language or computer language, in any form or by any means, electronic, mechanical, magnetic, optical, chemical, manual or otherwise, without the prior written permission of Hemisphere GPS Inc.

TRADEMARKS

Hemisphere GPS and the Hemisphere GPS logo, Satloc and the Satloc logo, Mapstar, Air Star Outback Guidance and eDrive are trademarks of Hemisphere GPS. Other trademarks are the properties of their respective owners.

NOTICE TO CUSTOMERS

Contact your local dealer for technical assistance. To find the authorized dealer near you, call or write us at:

Hemisphere GPS Inc.

4110 9 Street S.E.
Calgary, AB, Canada
T2G 3C4

Telephone number: (403) 259-3311
Fax number: (403) 259-8866
E-mail address: sales@hemispheregps.com

Warranty Notice

COVERED PRODUCTS

This warranty covers all products manufactured by Hemisphere GPS Inc. (the "Products").

HEMISPHERE GPS INC. LIMITED WARRANTY

Hemisphere GPS Inc. hereby warrants solely to the end purchaser of the Products, subject to the exclusions and procedures set forth herein below, that the Products sold to such end purchaser shall be free, under normal use and maintenance, from defects in material and workmanship for a period of 12 months from delivery to such end purchaser. Repairs and replacement components are warranted, subject to the exclusions and procedures set forth below, to be free, under normal use and maintenance, from defects in material and workmanship for 90 days from performance or delivery, or for the balance of the original warranty period, whichever is greater.

PURCHASER'S EXCLUSIVE REMEDY

The end purchaser's exclusive remedy under this warranty shall be limited to the repair or replacement, at the option of Hemisphere GPS, of any defective Products or components thereof. The end user shall notify Hemisphere GPS or a Hemisphere GPS approved service center immediately of any claimed defect. Repairs shall be made through a Hemisphere GPS approved service center only.

EXCLUSIONS

Hemisphere GPS does not warrant damage occurring in transit or due to misuse, abuse, improper installation, neglect, lightning (or other electrical discharge) or fresh/salt water immersion of Products. Repair, modification or service of Hemisphere GPS products by any party other than a Hemisphere GPS approved service center shall render this warranty null and void. Hemisphere GPS does not warrant claims asserted after the end of the warranty period. Hemisphere GPS does not warrant or guarantee the precision or accuracy of positions obtained when using Products. Products are not intended for primary navigation or for use in safety of life applications. The potential accuracy of Products as stated in Hemisphere GPS literature and/or Product specifications serves to provide only an estimate of achievable accuracy based on:

- Specifications provided by the US Department of Defense for GPS Positioning,
- DGPS service provider performance specifications.

Hemisphere GPS reserves the right to modify Products without any obligation to notify, supply or install any improvements or alterations to existing Products.

NO OTHER WARRANTIES

THE FOREGOING WARRANTY IS EXCLUSIVE OF ALL OTHER WARRANTIES, WHETHER WRITTEN, ORAL, IMPLIED OR ARISING BY STATUTE, COURSE OF DEALING OR TRADE USAGE, IN CONNECTION WITH THE DESIGN, SALE, INSTALLATION, SERVICE OR USE OF ANY PRODUCTS OR ANY COMPONENTS THEREOF, INCLUDING, BUT NOT LIMITED TO, ANY WARRANTY OF MERCHANTABILITY OR FITNESS FOR A PARTICULAR PURPOSE.

LIMITATION OF LIABILITY

THE EXTENT OF HEMISPHERE GPS' LIABILITY FOR DAMAGES OF ANY NATURE TO THE END PURCHASER OR ANY OTHER PERSON OR ENTITY WHETHER IN CONTRACT OR TORT AND WHETHER TO PERSONS OR PROPERTY SHALL IN NO CASE EXCEED, IN THE AGGREGATE, THE COST OF CORRECTING THE DEFECT IN THE PRODUCT OR, AT HEMISPHERE GPS' OPTION, THE COST OF REPLACING THE DEFECTIVE ITEM. IN NO EVENT WILL HEMISPHERE GPS BE LIABLE FOR ANY LOSS OF PRODUCTION, LOSS OF PROFITS, LOSS OF USE OR FOR ANY SPECIAL, INDIRECT, INCIDENTAL, CONSEQUENTIAL OR CONTINGENT DAMAGES, EVEN IF HEMISPHERE GPS HAS BEEN ADVISED OF THE POSSIBILITY OF SUCH DAMAGES. WITHOUT LIMITING THE FOREGOING, HEMISPHERE GPS SHALL NOT BE LIABLE FOR ANY DAMAGES OF ANY KIND RESULTING FROM INSTALLATION, USE, QUALITY, PERFORMANCE OR ACCURACY OF ANY PRODUCTS.

GOVERNING LEGISLATION

To the greatest extent possible, this warranty shall be governed by the laws of the State of Arizona. In the event that any provision hereof is held to be invalid by a court of competent jurisdiction, such provision shall be severed from this warranty and the remaining provisions shall remain in full force and effect.

OBTAINING WARRANTY SERVICE

In order to obtain warranty service, the end purchaser must bring the Product to a Hemisphere GPS approved service center along with the end purchaser's proof of purchase. For any questions regarding warranty service or to obtain information regarding the location of any of Hemisphere GPS' approved service centers, contact Hemisphere GPS at the following address:

Hemisphere GPS Inc.

7560 East Redfield Road, Suite B

Scottsdale, Arizona 85260

Phone 480.348.9919 Fax 480.348.6370

techsupport@hemispheregps.com

<http://www.hemispheregps.com>

Table of Contents

OVERVIEW	1
Overview	2
1: INTEGRATION	5
Mechanical Layout	6
LED Indicators	9
SBX-4 Block Diagram	10
SBX-4 Connector Pin Assignments	11
Signal Lock Indicator Pin	13
Reset Pin	14
Antenna Interface	15
Radio Frequency Immunity and Emissions	16
SBX-4 Dual Serial Port Overview	17
Single Serial Port Operation	17
Dual Serial Port Operation	18
Factory Default Settings	19
SBX-4 Integration Summary	20



2: SBX-4 OPERATION	23
Introduction	24
Beacon Information	25
Operating Modes	26
Automatic Beacon Search (ABS) Mode	26
ABS Global Search	26
ABS Background Search	27
Manual Mode	28
Database Mode	28
New SBX-4 commands	30
Evaluating Performance	34
APPENDIX	35
Index	43





OVERVIEW

OVERVIEW

Welcome to the SBX-4 Integrator Manual and thank you for considering Hemisphere GPS for your differential GPS requirements. The purpose of this manual is to familiarize you with the proper installation, configuration and operation of the SBX-4 beacon receiver module and to introduce you the mechanical, electrical and communication properties of this OEM receiver. This document provides instructions and recommendations related to a successful integration of the SBX-4 engine.

The SBX-4 is an extremely sensitive 300 kHz minimum shift keying (MSK) demodulator. It obtains differential GPS corrections broadcast by radio beacons adhering to standards such as International Telecommunications Union M.823 and various broadcast standards in the frequency range of 283.5 to 325.0 kHz.

This document is intended to assist a systems designer with the integration of the SBX-4. Successful integration of this module within a system will require significant electronics expertise, such as power supply design, serial port level translation, reasonable radio frequency competency, an understanding of electromagnetic compatibility and circuit design and layout.

The SBX-4 engine is a low-level module intended for custom integration with the following general integration requirements:

- Regulated power supply input (3.3 VDC +/- 3%) and 70 mA continuous
- Low-level serial port communications (3.3 V CMOS)
- The beacon antenna is powered with a separate regulated voltage source of 5 VDC
- The antenna input impedance is 50 ohms



The chapters that follow provide detailed information on the SBX-4 module, including the hardware and software interface, in addition to various descriptions of technologies and features that it supports.

Some notable features of the SBX-4 module are:

- Dual channel tracking for increased robustness
- Dual serial ports accommodate both NMEA and RTCM communications
- Certified IEC 61108-4 compliant
- Patented ceramic filter blocks out-of-band signals, optimizing reception
- Low power and lock status LEDs permit visual verification of receiver status
- Reverse compatibility ensures operation in existing SBX-2 and SBX-3 integrations
- Boot loader for firmware upgrade reliability





1: INTEGRATION

Mechanical Layout
LED Indicators
SBX-4 Block Diagram
Connector Pin Assignments
Antenna Interface
RF Immunity and Emissions
Dual Serial Port Overview
Default Parameters
SBX-4 Integration Summary

MECHANICAL LAYOUT

Figure 1-1 to 1-3, on pages 6 to 8, provides the physical layout of the SBX-4 beacon receiver, including dimensions and key components.



Note: Figure 1-1 to Figure 1-3's dimensions are in inches.

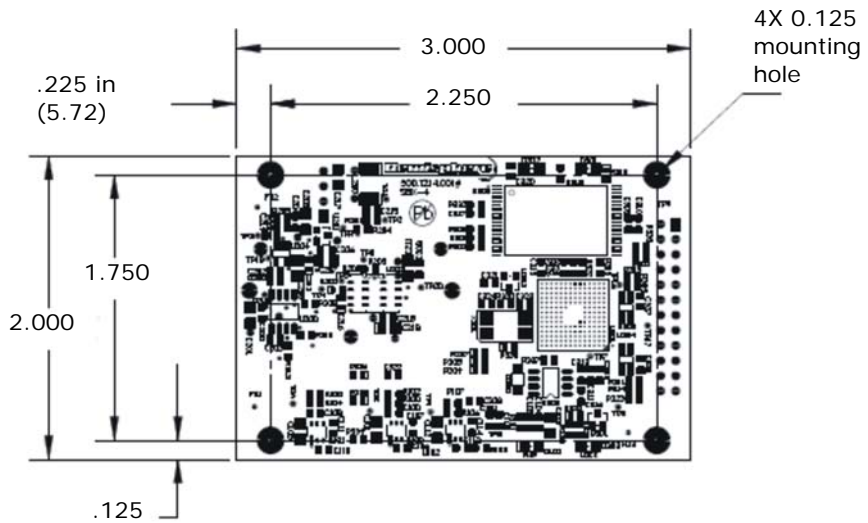


Figure 1-1. Top-side view of SBX-4



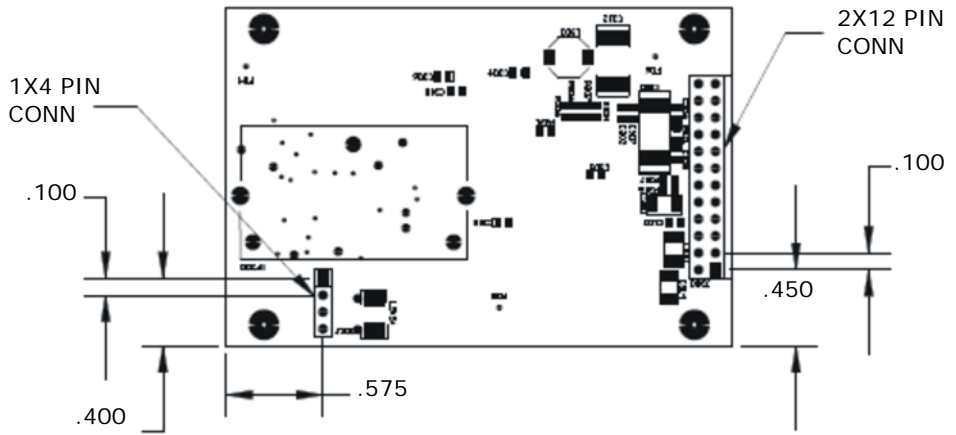


Figure 1-2. SBX-4 bottom view



1: Integration

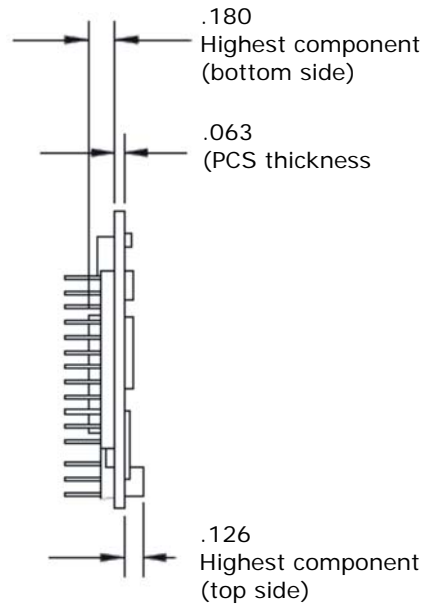


Figure 1-3. SBX-4 side view



LED INDICATORS

The SBX-4 engine has two surface-mounted LED indicators located on the opposite side of the board in relation to the header connectors. The red LED is for signaling the power-on status of the receiver, labeled with "PWR" silk-screening. The green LED is for indicating signal acquisition, labeled with "LOCK" silk-screening. When power is applied to the SBX-4, the power LED illuminates and when the SBX-4 achieves signal acquisition on a valid DGPS beacon, the lock LED illuminates.

Figure 1-4 shows the front and back of the SBX-4, including the illumination of the power and lock LED indicators.

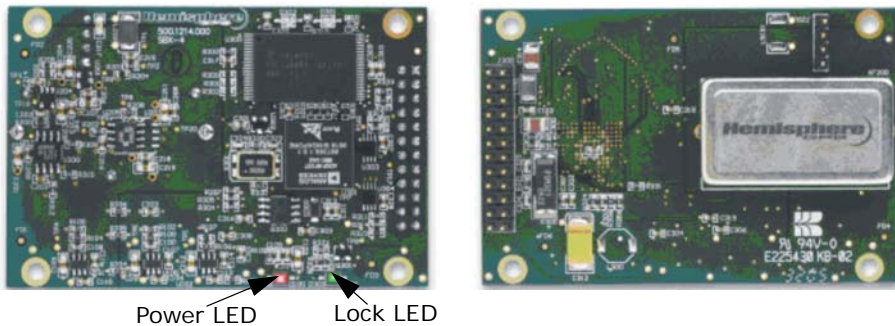


Figure 1-4. SBX-4, front and back



SBX-4 BLOCK DIAGRAM

The SBX-4 accepts an analog input signal between 283.5 kHz and 325.0 kHz from an antenna into its front end where it is filtered and converted to a digital output. The Digital Signal Processor (DSP) demodulates GPS correction information from the digital stream. The output of the SBX-4 is RTCM SC-104 DGPS correction data at a 3.3 V CMOS interface level. Figure 1-3 provides a view of the block diagram. Figure 1-5 displays the block diagram.

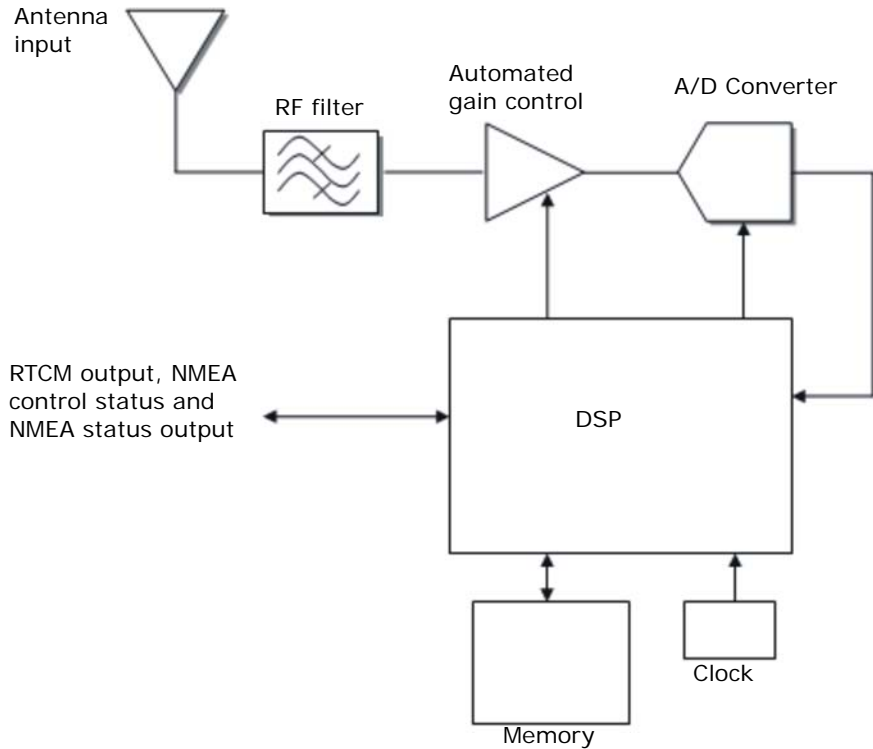


Figure 1-5. Block diagram



SBX-4 CONNECTOR PIN ASSIGNMENTS

The SBX-4 has two header connectors designated as J200 and J300, labeled with on-board silk-screening. The J200 connector is a 1 x 4 pin header with 0.1 in (2.54 cm) spacing that provides antenna power input, and signal distribution. The J300 connector is a 2 x 12 pin header with 0.1 in (2.54 cm) spacing that provides access to antenna power input, receiver serial ports, receiver power, external reset and external lock indicator functions.

Table 1-1 provides pin-out information for connector J200:

**Table 1-1: SBX-4 connector J200 pin-out
(Samtec TSW-10407-G-S)**

Pin	Signal	Description
1, 3	Ground	Analog ground
2	RF signal input	Antenna RF signal input
4	Antenna power output	Antenna power supply 5 VDC



Table 1-2 provides pin-out information for connector J300:

Table 1-2: SBX-4 connector J300 pin-out (Samtec TSW 11207-G-D)

Pin	Signal	Description
1, 2	Antenna power in	Antenna power supply input: 5 VDC
3, 4	SBX-4 power in	Receiver power supply input: 3.3 VDC
14	TXD0 output, 3.3 V CMOS	NMEA, RTCM and status output
15	TXD1 output, 3.3 V CMOS	NMEA and status output
16	Lock	Lock indicator (active high)
17	RXD0 Input, 3.3 V CMOS	Command/query input
18	RXD1 Input, 3.3 V CMOS	Command/query input
19	External reset input	External reset input (active low)
21, 22 23, 24	Ground	Digital ground



Note: In order to maintain backwards hardware compatibility with the SBX-3, it is possible to power the SBX-4 with 5 V. The serial data output level will track the input voltage when greater than 3.3 V is supplied. The serial data inputs will be tolerant to voltages up to the level of the supplied input voltage.



SIGNAL LOCK INDICATOR PIN

Pin 16 of connector J300 may be used to drive an LED or sensor to indicate that the SBX-4 is locked to a beacon signal and is demodulating RTCM SC-104 data. The maximum current available from this pin is 5 mA at an input voltage 3.3 V. The output of this signal may be transistor buffered within your integration if greater current is required.

Figure 1-6 illustrates an example lock indicator circuit.

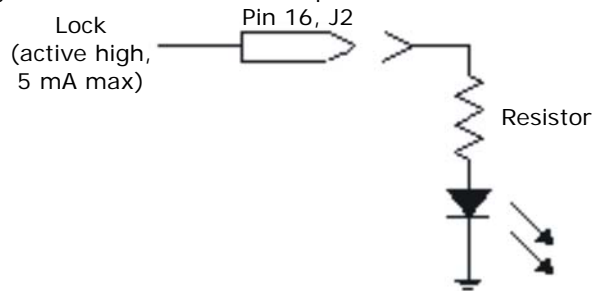


Figure 1-6. Lock indicator circuit



RESET PIN

Pin 19 of connector J300 may be used to reset the SBX-4. Activating the reset circuit of the SBX-4 results in the same effect as cycling the input power to the receiver. The operating configuration of the receiver before reset is maintained, including operating mode, baud rate, frequency and MSK rate of the last tuned station.

Figure 1-6 illustrates an example reset switch circuit.

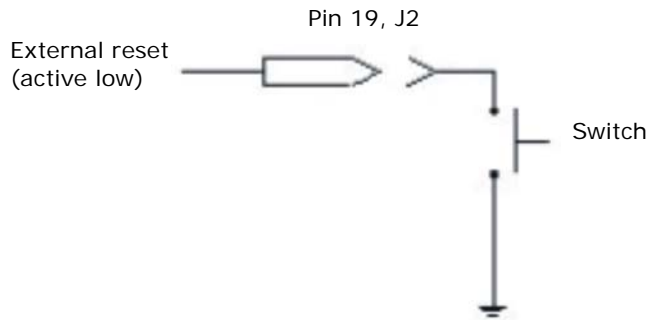


Figure 1-6. Reset switch circuit



ANTENNA INTERFACE

Power may be supplied to the antenna externally through the SBX-4 OEM beacon receiver in one of two ways:

- Connect Pin 4 of J200 to the antenna power supply (+5 VDC) and connect pin 1 and 3 to ground
- Connect Pin 1 and 2 of SBX-4 connector J300 to the associated power supply (+5 VDC) and connect pin 1 and 3 of J200 to ground

Pin 4 of connector J200 is internally connected to Pins 1 and 2 of connector J300. Antenna signal input to the receiver is provided via Pin 2 of J200.



Note: The antenna input voltage is not current limited on the SBX-4 board. If current limiting is required, the circuitry must be provided within your integration.



Note: External power applied to the SBX-4 for powering the antenna is internally coupled to the signal input pin (Pin 2 of J300). You do not have to provide this circuitry within your integration.

If you intend to use a 4-pin connector (for example, Panduit CE100F22-4) and a length coaxial cable to interface the antenna to the SBX-4, follow these instructions:

1. Connect the center conductor of the coaxial cable to Pin 2 of J200.
2. Connect the shield of the coaxial cable to Pin 1 or Pin 3 of J200.



RADIO FREQUENCY IMMUNITY AND EMISSIONS

When integrating the SBX-4, ensure that complete integration does not emit significant noise within the 283.5 to 325.0 kHz beacon band. In-band interference incident upon the SBX-4 or its antenna can influence the reception enough that its quality may be degraded, resulting in a lower SNR measurement with reduced GPS correction data throughput.

Beacon antennas are designed to pick up any radio frequency energy within the 283.5 to 325.0 kHz beacon band. Both beacon signals and environment noise will be picked up by the antenna and amplified before going to the receiver. Eliminating the majority of noise within the beacon band is crucial to achieve optimal system performance.

It is very important to consider the overall performance objectives of the system design with respect to radio frequency emissions. Certain nations and industries around the world require positioning and navigation electronics to achieve certain levels of electromagnetic emissions.



SBX-4 DUAL SERIAL PORT OVERVIEW

The SBX-4 features two full duplex serial ports (Port 0 and Port 1). Use of the second serial port is an option as the SBX-4 supports identical functionality as its predecessor, the SBX-3 on Port 0.

The main purpose of the second serial port is to allow the continuous flow of RTCM data from Port 0 to a GPS receiver while allowing monitoring of SBX-4 performance via NMEA response messages on Port 1. Separating RTCM differential data from NMEA status data when output via the same serial port poses software integration challenges and potential GPS RTCM reception conflicts.

Single Serial Port Operation

Some integration designs using the SBX-4 beacon receiver include a micro-controller between the beacon and GPS receiver to provide enhanced communication and data parsing capability.

Within this type of integration, it is possible for the micro-controller to command and query the beacon receiver and to parse NMEA response strings from RTCM data without impeding the continuous flow of RTCM data to the connected GPS sensor.

To separate NMEA messages from RTCM data output by Port 0 through a parsing routine, without causing a parity failure of the RTCM, it is necessary to take advantage of the fact that "\$" and "<LF>" are not supported within the RTCM specification, provided there are no bit errors in the RTCM stream to start with. Therefore, if a "\$" is received, then it should be considered as the beginning of a NMEA sentence and a "<LF>" should be expected within a window of certain length. If the parsing routine does not receive one, due to an unlikely communication line error, after a window of a particular number of bits has passed, re-synchronization to the RTCM data must occur.





Note: If port 1 is not being used, pin 18 should be connected to the input power supply through a 10 Kohm resistor.

Dual Serial Port Operation

Although an integration may be designed with a microprocessor between the SBX-4 and the GPS receiver to tune and monitor SBX-4 status, the second serial port of the SBX-4 eliminates the requirement to develop a NMEA message parsing algorithm.

With this type of architecture, the SBX-4's main serial port may be interfaced to the GPS receiver's receive line to provide RTCM correction data. The secondary serial port interfaces to the microprocessor for NMEA configuration and querying. This ensures that NMEA response messages do not interrupt the continuous flow of RTCM data to the GPS receiver.



FACTORY DEFAULT SETTINGS

Table 1-3 presents the factory default SBX-4 operating mode, while Table 1-4 lists the default SBX-4 communication settings. These operation and port settings are valid upon initial power-up. The SBX-4 maintains any changes made to its operating or port settings in non-volatile memory for subsequent power cycles.

Table 1-3: Default SBX-4 operating mode

Tune mode
Automatic

Table 1-4: Default SBX-4 port settings

Baud Rate	Data Bits	Parity	Stop bit	Interface level
4800	8	None	1	3.3 V CMOS



SBX-4 INTEGRATION SUMMARY

The following steps summarize the general requirements for integrating the SBX-4 and identifies the command and control features provided:

1. SBX-4 Power Input - Apply a 3.3 VDC power input to Pin 3 of J300 with the power-return connection at Pin 21 of J300.
2. Antenna Power Input - Apply +5 VDC to either
 - Pin 4 of J200 with an antenna power ground connection on Pin 1 of J200

-or-

 - Pin 1 of J300 with an antenna power ground connection to Pin 1 of J200.
3. Antenna Signal Input to SBX-4 - Connect the coaxial cable center conductor to Pin 2 of J200 and the shield to Pin 3 of J200.
4. SBX-4 Serial Ports - The SBX-4 serial ports communicate at a 5 V CMOS interface level. You must provide level translation circuitry to connect to a standard RS232/422 type device. Pin assignments for the communication ports of the SBX-4 are as follows:
 - Pin 14 of J300 - TXD0, this is the Port 0 transmit data output from the SBX-4
 - Pin 15 of J300 - TXD1, this is the Port 1 transmit data output from the SBX-4
 - Pin 17 of J300 - RXD0, this is the Port 0 receive data input to the SBX-4
 - Pin 18 of J300 - RXD1, this is the Port 1 receive data input to the SBX-4
 - Pin 23 of J300 - Signal return, Port 0
 - Pin 24 of J300 - Signal return, Port 1



5. The following events occur when the SBX-4 is powered-up, or reset:
 - Receiver serial number is output
 - Configuration and beacon tables are verified and defaulted if required
 - Software identification and version are reported
 - Channel status information is reported

The following strings are output by the SBX-4 during power up or following receiver reset:

```
$PCSI,DGPS,P0
$PCSI,S/N:00019001
$PCSI,FCFGcrc,CBF8,CCFGcrc,CBF8,Pass
$PCSI,FGLBcrc,448A,CGLBcrc,448A,Pass
$PCSI,FLSHcrc,1C12 Pass
$PCSI,FSTAcrc,FBEA User,FFFF,FFFF
$PCSI,SBX~4 P030-0 2 Channel DGPS Version 001
$PCSI,F2835,0,R100,0,C0,0
$PCSI,F2835,0,R100,0,C1,0
```

6. When powered for the first time, the SBX-4 will operate in the default ABS mode and will conduct a Global Search (GS) to identify the highest quality beacon signal. Following the signal acquisition phase of the GS and when the primary receiver channel has acquired a beacon, the receiver's second channel will conduct a background search.
7. When the SBX-4 receives a valid RMC message on Port 0, it will switch to database mode.
8. You may tune the receiver to a specific beacon using the \$GPMK Manual Tune command referred to in Hemisphere GPS' GPS Technical Reference.
9. When tuned to a valid beacon, the SBX-4 monitors RTCM SC-104 message lock, parity check and outputs RTCM



1: Integration

corrections through its primary communications port. The SBX-4 asserts the lock signal on pin 16 of J300 (active high).

10. When input power to the SBX-4 is cycled, or the receiver reset circuit is activated, the SBX-4 will attempt to reacquire the last station to which it was tuned. In Automatic mode, the SBX-4 will try to lock to this station for 10 seconds before initiating a fresh GS to identify valid beacons. If set to Manual mode, the receiver will attempt to lock to the last known beacon indefinitely, or until commanded to a new frequency and bit rate. In Database mode, the SBX-4 will try to lock to the closest station using the last valid position.





2: SBX-4 OPERATION

Introduction

Beacon Information

Operating Modes

New SBX-4 Commands

Evaluating Performance

INTRODUCTION

Many marine authorities, such as coast guards, have installed networks of radio beacons that broadcast DGPS corrections to users of this system. With the increasing utility of these networks for terrestrial applications, there is an increasing trend towards densifying networks inland. The SBX-4 is able to operate in manual or automatic tuning mode, or using Database mode which will select the closest station in compliance with IEC 61108-4 standards. In Database mode, the receiver will search for the closest station based on its current location and distance to the internal list of station locations.

This chapter includes information on the following topics:

- Beacon information
- Operating modes
- Evaluating performance



BEACON INFORMATION

The International Association of Marine Aids to Navigation and Lighthouse Authorities (IALA) endeavors to maintain an accurate listing of DGPS radio beacons worldwide that is available on the Internet from their home page:

<http://www.iala-aism.org/>

This listing contains the following information regarding currently operating beacons and potential new sites:

- Station name
- Frequency
- MSK rate
- Location Transmitting ID
- Reference station ID
- Field Strength
- Operating notes

For detailed information on radio beacon transmissions, please refer to Hemisphere GPS' GPS Technical Reference.



OPERATING MODES

The SBX-4 may be operated in Automatic Beacon Search (ABS) mode, Manual Tune or Database mode. In ABS mode, the receiver will identify and tune to the station providing the strongest DGPS signal using two receiver channels. In Manual mode, you specify the frequency to which the receiver will tune. In Manual mode, only the primary receiver channel is used. In Database mode, the receiver will search for the closest station based on its current location and distance to the internal list of station locations.

Refer to Hemisphere GPS' GPS Technical Reference Manual for commands relating to changing the operating mode and monitoring receiver performance.

Automatic Beacon Search (ABS) Mode

The SBX-4 beacon receiver operates in ABS mode by default, selecting and tuning to the most appropriate beacon without operator intervention. The SBX-4 uses its two independent channels to identify and lock to the best DGPS beacon.

ABS mode is ideal for navigation applications over considerable areas with various beacon stations available, eliminating the need for operator intervention when traveling from one beacon coverage zone to another.

ABS Global Search

When powered for the first time in ABS mode, the SBX-4 initiates a Global Search (GS), examining each available DGPS beacon frequency, and recording Signal Strength (SS) measurements in units of decibel micro volts to the Global Search Table. The receiver uses these measured values to compute an average SS, noise floor and to sort the frequencies in descending order of SS.

This initial phase of the GS takes approximately 3 to 4 seconds to scan all 84 beacon channels in the frequency band using both



channels. Once scanned, and with SS numbers identified for each beacon channel, both receiver channels cooperatively examine the frequencies with the highest SS measurements, above the computed noise floor, to determine the station providing the strongest RTCM signal. The receiver's primary channel locks to the first identified DGPS broadcast, while the second channel continues searching in the background for superior beacon signals. If no signal is available, the SBX-4 will initiate a fresh GS, continuing this cycle until it finds a valid beacon.

The secondary acquisition phase of the GS composes the remainder of the time required to acquire the beacon signal. The time required to acquire a beacon in ABS mode is dependent upon the signal quality of DGPS beacons in your area, and their relative strength to other non-DGPS beacon signals in the 283.5 to 325.0 kHz band. As this frequency range is a navigation band, it is shared with other navigation aides such as non-directional beacons used for aviation and marine navigation. Depending on the signals available, initial acquisition may take less than 15 seconds for a strong beacon station, from a cold start or up to a couple minutes if a beacon site is weak relative to other signals. During the acquisition phase, if bit errors occur due to a weak DGPS beacon signal or environmental noise occurs, the time to acquire may be longer.

ABS Background Search

During the Background Search, the second channel examines all frequencies at both the 100 and 200 bps MSK bit rates to identify beacons possessing superior signal quality. If a DGPS broadcast is identified that exhibits a 2 dB greater signal strength than that of the primary station, the receiver will automatically switch to this beacon. No loss of lock occurs on the primary station during the background scan process. If the secondary receiver channel finds a superior station, the main channel is instructed to tune to the new beacon.



2: SBX-4 Operation

The SBX-4 stores the current primary beacon in memory so that it is available upon subsequent power-up. You may force a new GS at any time using the \$PCSI,4<CR><LF> proprietary NMEA 0183 command defined in Hemisphere GPS' GPS Technical Reference.

Manual Mode

In Full Manual Tune mode, you may specify a frequency and bit rate for the receiver to tune to or specify the frequency only, allowing the SBX-4 to identify the correct MSK bit rate automatically (Partial Manual Tune mode). Setting manual operation is discussed in Hemisphere GPS' GPS Technical Reference, using the \$GPMSK NMEA 0183 command.

Acquisition of a beacon in manual tune mode is dependent upon the data rate of the station. In Full Manual Tune mode with an MSK rate of 200 bps, signal acquisition should occur within 5 seconds if no demodulation errors occur. Signal acquisition should occur within 10 seconds for a modulation rate of 100 bps provided that no demodulation errors occur.

Partial Manual Tune mode requires that the SBX-4 identify the correct MSK rate automatically. This automatic detection could result in signal acquisition rates of up to approximately 15 seconds.

Database Mode

This operating mode has been added to the SBX-4 in order to be compliant with the specification IEC 61108-4 for ship borne DGPS maritime radio beacon receiver equipment. The basic operation is outlined below.

1. The receiver will determine the 10 closest stations after receiving a valid RMC message on PORT 0. This list can be accessed using the command \$PCSI,3,2.
2. The primary channel tries to tune to the closest available station, using the frequency and bit rate specified in the station database.



3. The background channel tunes to the frequency of the closest station using an alternate bit rate.
4. The primary channel retunes to the alternate bit rate if lock is achieved on the background channel (with acceptable station health and WER).
5. The background channel continually searches for a closer station using the station database once a lock is achieved on the primary channel.
6. The primary channel will remain tuned to the same station unless one of the following occurs:
 - Word error rate (WER) drops below 10%
 - Station becomes unhealthy or unmonitored
 - Background channel finds a closer station
 - Position changes enough to affect station list



NEW SBX-4 COMMANDS

Database tune command:

```
$GPMSK , , D , , D<CR><LF>
```

Display contents of station database:

```
$PCSI , 3 , 3<CR><LF>
```

Response:

```
$PCSI,3,3,IDref1,IDref2,StationID,name,freq,lat,long,datum,s  
tatus
```

```
$PCSI,3,3, ...
```

```
$PCSI,3,3, ...
```

```
$PCSI,3,3, ...
```

Example:

```
$PCSI,3,3,0282,0283,0891,Level Island AK,2950,20554,-  
24221,1,0
```

```
$PCSI,3,3,0306,0307,0906,Sandspit BC,3000,19377,-  
23991,1,0
```

```
$PCSI,3,3,0278,0279,0889,Annette Is. AK,3230,20044,-  
23951,1,0
```

```
$PCSI,3,3,0300,0301,0909,Alert Bay BC,3090,18412,-  
23099,1,0
```

```
$PCSI,3,3,0302,0303,0908,Amphitrite Pt BC,3150,17806,-  
22850,1,0
```

```
$PCSI,3,3,0270,0271,0885,C. Mendocino CA,2920,14718,-  
22641,1,0
```



\$PCSI,3,3,0272,0273,0886,Fort Stevens OR,2870,16817,-22559,1,0

\$PCSI,3,3,0304,0305,0907,Richmond BC,3200,17903,-22407,1,0

\$PCSI,3,3,0276,0277,0888,Whidbey Is. WA,3020,17587,-22331,1,0...

- Latitude is scaled by 364 (+ indicates N, - indicates S)
- longitude is scaled by 182 (+ indicates E, - indicates W)
- Datum: 1 (NAD83), 0 (WGS84)
- Status: 0 (operational, 1 (undefined), 2 (no information), 3 (do not use)

Display list of 10 closest stations:

\$PCSI,3,2<CR><LF>

Response:

\$PCSI,3,2,StationID,name,freq,status,distance,time,date,health,WER

\$PCSI,3,2, ...

\$PCSI,3,2, ...

\$PCSI,3,2, ...

Example:

\$PCSI,3,2,849,Polson MT,2870,0,210,0,0,-1,-1



2: SBX-4 Operation

\$PCSI,3,2, 848,Spokane WA,3160,0,250,0,0,-1,-1
\$PCSI,3,2, 907,Richmond BC,3200,0,356,0,0,-1,-1
\$PCSI,3,2, 888,Whidbey Is. WA,3020,0,363,0,0,-1,-1
\$PCSI,3,2, 887,Robinson Pt. WA,3230,0,383,0,0,-1,-1
\$PCSI,3,2, 874,Billings MT,3130,0,389,0,0,-1,-1
\$PCSI,3,2, 871,Appleton WA,3000,0,420,0,0,-1,-1
\$PCSI,3,2, 908,Amphitrite Pt BC,3150,0,448,0,0,-1,-1
\$PCSI,3,2, 886,Fort Stevens OR,2870,0,473,0,0,-1,-1
\$PCSI,3,2, 909,Alert Bay BC,3090,0,480,0,0,-1,-1

Notes:

- Distance is calculated in nautical miles
- The name field will display time/date of update for a station added by using information from an almanac message (in the format ddmmy->time)
- The time and date fields have not yet been implemented and currently display 0
- Status: 0 (operational), 1 (undefined), 2 (no information), 3 (do not use)
- Health: -1 (not updated), 8 (undefined), 0-7 (valid range)
- WER: -1 (not updated), 0-100 (valid range)

Status message:

\$PCSI,1,1<CR><LF>



Response:

\$PCSI,CS0,Pxxx-
y.yyy,SN,fff.f,M,ddd,R,SS,SNR,MTP,**WER**,,ID,H,T,**G**

Example:

\$PCSI,CS0,P030-
0.000,19001,313.0,D,100,D,18,8,80,**0**,63,0,1,**48**

Notes:

- Tune modes are "**A**"uto, "**M**"anual and "**D**"atabase
- WER: percentage of bad 30-bit RTCM words in the last 25 words
- G: AGC gain in dB (0 to 48 db)
- ID: 1024 (undefined), 0-1023 (valid range)
- H: 8 (undefined) 0-7 (valid range)



EVALUATING PERFORMANCE

The SBX-4 calculates a Signal to Noise Ratio (SNR), measured in dB (Decibels), which indicates the receiver's performance. The SNR is height of the signal above the noise floor. The higher the SNR, the better your beacon receiver is demodulating the signal. By monitoring the SNR, you can determine the optimum location with respect to beacon reception. The SNR is available in the \$CRMSS NMEA message described in Hemisphere GPS' GPS Technical Reference manual.

The SNR is also a function of the installation, as it may differ between locations, depending on the amount of local noise at each. The optimum antenna location will be the position where your average SNR is highest. You should turn on all accessories that you intend to use during normal operation to test the installation. If noise is affecting performance, try to find a better location with higher SNR.

Table 2-1 describes the general quality of reception as measured by the SNR reading of the SBX-4.

Table 2-1: SBX-4 Performance - SNR reading

SNR	Reception Reading	Data Throughput
> 25	Excellent	100% data throughput
20 to 25	Very good	100% data throughput
15 to 20	Good	Good data throughput up to 100%
10 to 15	Stable	Moderate to good data throughput
7 to 10	Intermittent	Low data throughput
< 7	No lock	No data throughput





APPENDIX

Troubleshooting
Specifications

A: Troubleshooting

Table A-1 provides troubleshooting for common SBX-4 problems.

Table A-1: Troubleshooting

Symptom	Possible solution
No data from SBX-4	<ul style="list-style-type: none"> • Check receiver power status (power LED illuminated?) • Verify that SBX-4 is locked to a valid beacon (Lock LED illuminated) • Check integrity of power, antenna and cable connections
Random data from SBX-4	<ul style="list-style-type: none"> • Check transmitting beacon status • Verify baud rate of SBX-4 and terminal device (SBX-4 default baud rate = 4800 bd) • Ensure pin 18 of J300 is tied high if Port 1 is not being used
Low SNR	<ul style="list-style-type: none"> • Check integrity of antenna connections • Check MBA-3 antenna ground • Select alternate antenna position
Database mode not selectable	<ul style="list-style-type: none"> • Ensure that the SBX-4 is receiving valid RMC messages on Port 0



Table A-1: Troubleshooting

Symptom	Possible solution
No signal lock	<ul style="list-style-type: none"> • Check antenna connections • Verify MSK rate is set correctly or choose Auto MSK rate (100, 200 or Auto) • Verify frequency of transmitting beacon or choose Auto Frequency Mode • Check MBA-3 antenna • Verify SBX-4 antenna port output voltage (5 VDC) • Verify 5 VDC across antenna cable connector
No response to NMEA commands and queries	<ul style="list-style-type: none"> • Verify baud rate settings of SBX-4 and terminal device (SBX-4 default baud rate = 4800 bd) • Verify communication parameter settings (8 data bits - no parity - 1 stop bit) • Check integrity of data cable connections • Verify pin connectivity between SBX-4 and terminal device



Table A-1: Troubleshooting

Symptom	Possible solution
Non-differential GPS output	<ul style="list-style-type: none">• Verify SBX-4 lock status• Verify matched SBX-4 output and GPS RTCM input baud rates• Verify GPS receiver RTCM compatibility• Verify GPS receiver DGPS configuration• Verify pin connectivity between SBX-4/Evaluation Module and GPS receiver• Verify communication parameter settings (8 data bits - no parity - 1 stop bit)• Verify communication levels of SBX-4 and GPS receiver are matched (HCMOS vs RS-232C vs RS-422)• Verify data cable connections



B: SBX-4 Specifications

Tables B-1 to B-5, on pages 43 to 45, provides the SBX-4's operational, serial interface, power, mechanical and environmental specifications.

Table B-1: Operational specifications

Item	Specification
Channels	2-channel parallel tracking
Frequency range	283.5 - 325.0 kHz
Channel spacing	500 Hz
MSK bit rate	50, 100 and 200 bps
Operating modes	Manual, automatic and database
Cold start time	< 1 minute typical
Re-acquisition time	< 2 seconds typical
Demodulation	Minimum shift key (MSK)
Sensitivity	2.5 microvolts/meter for 6 dB SNR @ 200 bps
Out of band rejection	60 dB < 204 kHz and > 404 kHz
Spurious response	< -55 dB (0.1 MHz to 1.6 MHz)
Ripple (in-band)	3 dB
Dynamic range	100 dB
Frequency offset	+/- 8 Hz (~ 27 ppm)
Adjacent channel rejection	61 dB +/- 1 dB @ frequency center +/-400 Hz



Table B-1: Operational specifications

Item	Specification
Antenna input impedance	50 Ohms
Decoding	RTCM 6/8
Frequency selection	Manual or offset

Table B-2: Serial interface specifications

Item	Specification
Serial ports	2 full-duplex
Interface level	HCMOS, tracks input voltage
Data connector	2 x 12 0.1 in (.25 cm) header
Data port baud rate	4800, 9600, 19200, 38400 and 57600 baud
Correction input/output protocol	RTCM SC-104
Data input/output format	NMEA 0183

Table B-3: Power specifications

Item	Specification
Input voltage	3.3 to 5.5 VDC
Power consumption	< 0.25 W @ 3.3 VDC (no antenna)
Current consumption	< 70 mA @ 3.3 VDC (no antenna)
Antenna voltage output	5 VDC applied externally



Table B-4: Mechanical specifications

Item	Specification
Dimension	76.2 mm L x 50.8 mm W x 13.8 mm H (93.0 in L x 2.0 in W x 0.54 in H)
Weight	30.0 g (1.1 oz)
Connector J200	1 x 4 pin header, 2.54 mm (0.1 in) spacing
Connector J300	2 x 12 pin header, 2.54 mm (0.1 in) spacing

Table B-5: Environmental specifications

Item	Specification
Storage temperature	-30° C to +70° C (-22° F to +158° F)
Operating temperature	-40° C to +80° C (-40° F to +176° F)
Humidity	95% non-condensing
EMC	EN50081-4-2 ESD
Output	5 VDC applied externally



- A** Antenna Interface 15
- B** Beacon Information 25
Block diagram 10
- C** Connector Pin Assignments 11–12
- D** Dual Serial Port Overview 17–18
Dual Serial Port Operation 18
Single Serial Port Operation 17–18
- E** Evaluating Performance 34
- F** Factory Default Settings 19
- I** Integration Summary 20–22
- L** LED Indicators 9
- M** Mechanical Layout 6–8
- N** New SBX-4 commands 30–33
- O** Operating Modes 26–29
 - ABS Background Search 27–28
 - ABS Global Search 26–27
 - Automatic Beacon Search (ABS) Mode 26
 - Database Mode 28–29
 - Manual Mode 28
- R** Radio Frequency Immunity and Emissions 16
Reset Pin 14
- S** Signal Lock Indicator Pin 13
Specifications 39–41
- T** Troubleshooting 36–38







www.hemispheregps.com
e-mail: info@hemispheregps.com